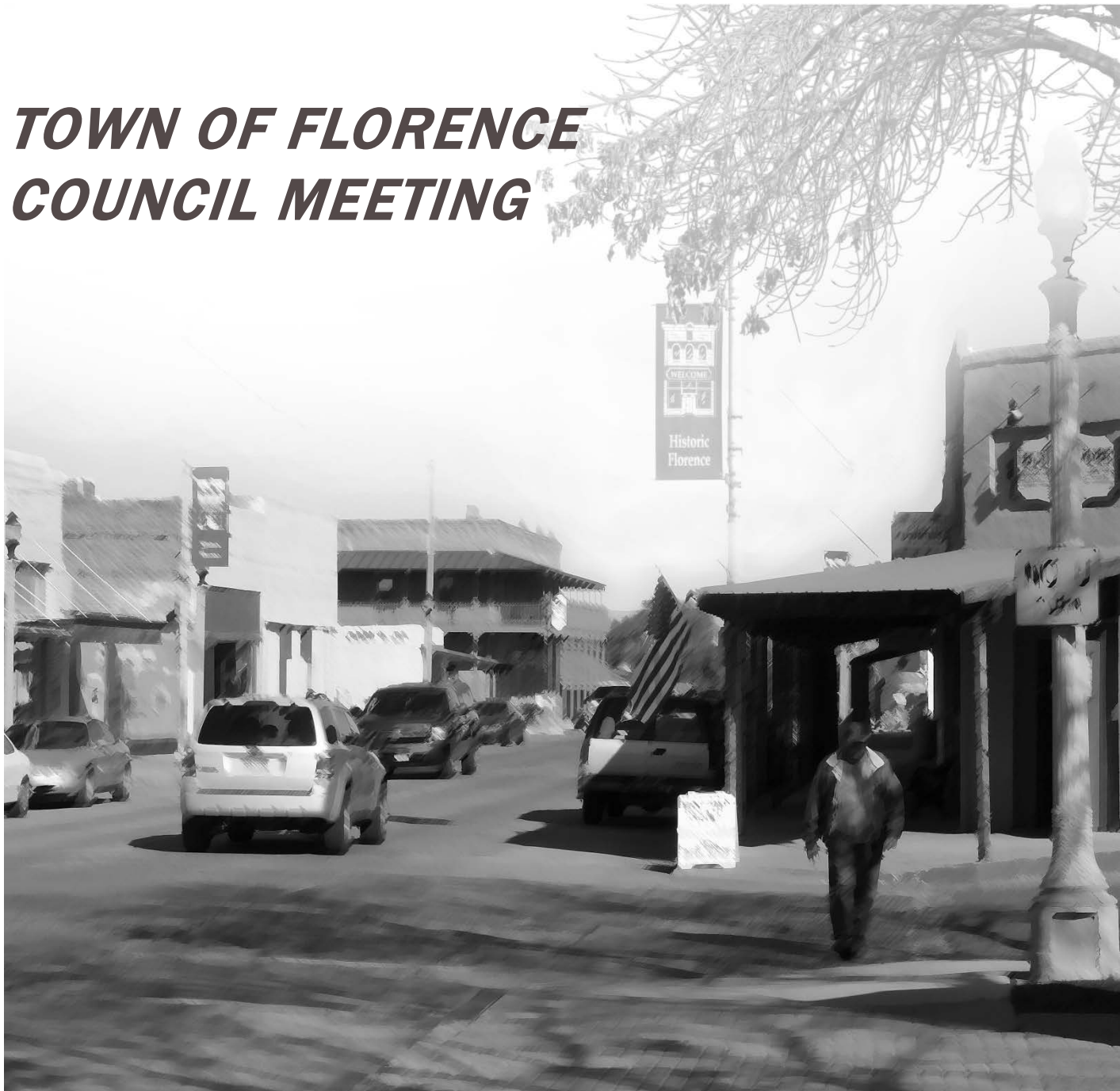


TOWN OF FLORENCE COUNCIL MEETING



December 8,
2014



NEW BUSINESS (ITEM 6C)

- **Resolution No. 1490-14:
Discussion/Approval/Disapproval of A RESOLUTION
OF THE TOWN OF FLORENCE, PINAL COUNTY,
ARIZONA, AFFIRMING THE TOWN OF FLORENCE'S
PREFERENCES REGARDING THE PROPOSED ADOT
NORTH-SOUTH FREEWAY CORRIDOR.**

North-South Corridor Study

What is the project?

ADOT is working with affected stakeholder agencies and the public to evaluate reasonable and feasible route alternatives for a proposed 45-mile, north-south transportation corridor in Pinal County and to prepare environmental documents and preliminary design plans for a phased implementation of the project.



What is the purpose?



There is a demonstrated need for greater north-south roadway connectivity through central Pinal County.

Population Growth Projections

1.1 M Pinal County by 2050



9.4 M Maricopa, Pima, and Pinal Counties by 2050

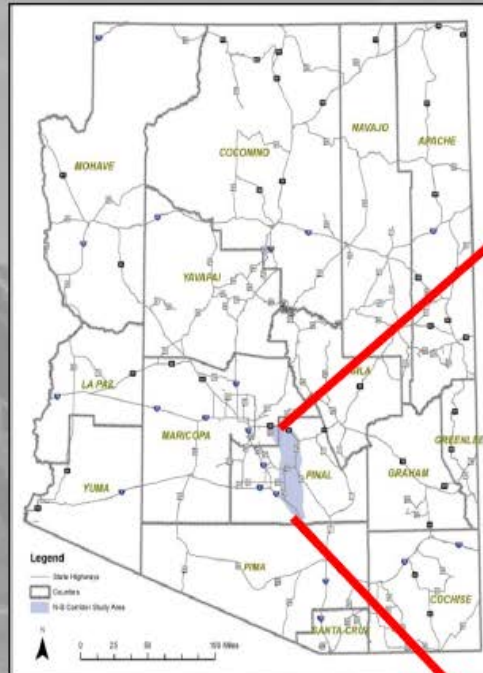
11.2 M Arizona by 2050

The project would:

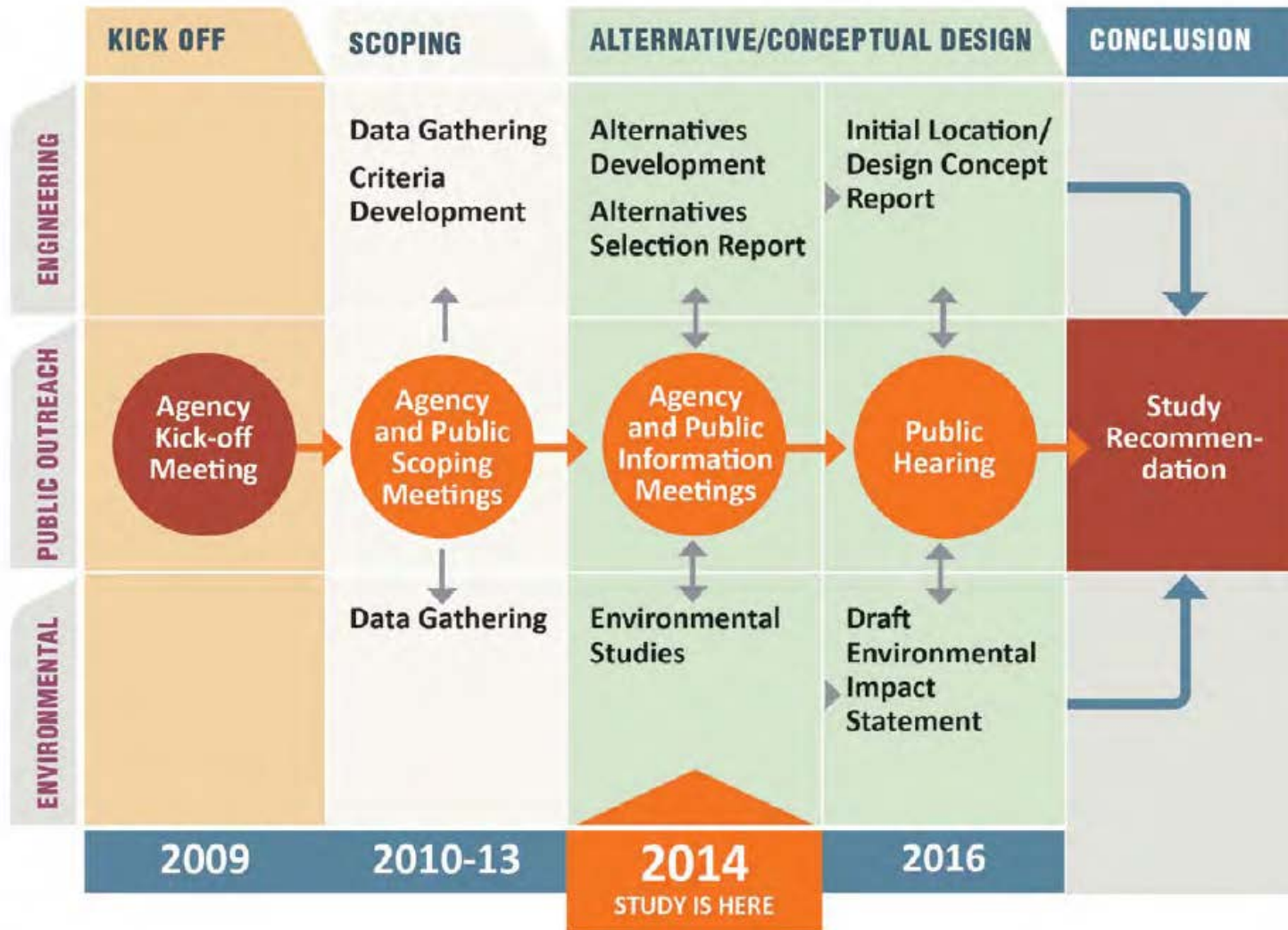
- Provide a continuous north-south route through central Pinal County
- Relieve traffic on I-10
- Improve access to future activity centers
- Create a more direct connection to the eastern portion of the Phoenix metropolitan area
- Relieve congestion anticipated from projected growth

Project Overview

- ▶ US 60 to I-10
 - SR 24 Study Area
 - Superstition Vistas
 - Gila River
 - Railroads
 - Picacho Reservoir
 - Picacho Mountains
 - CAP Canal



Study Process

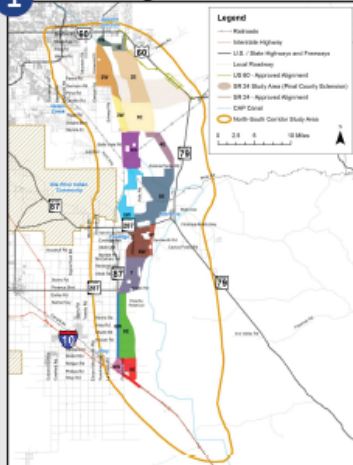


North-South Corridor Study

How were the alternatives selected?

EVALUATION PROCESS

1 Corridor segments



2 Possible route alternatives



3 Local stakeholder agency rating



4 Regional, state, and federal stakeholder agency rating



5 Public preference rating



6 Recommended Route Alternatives

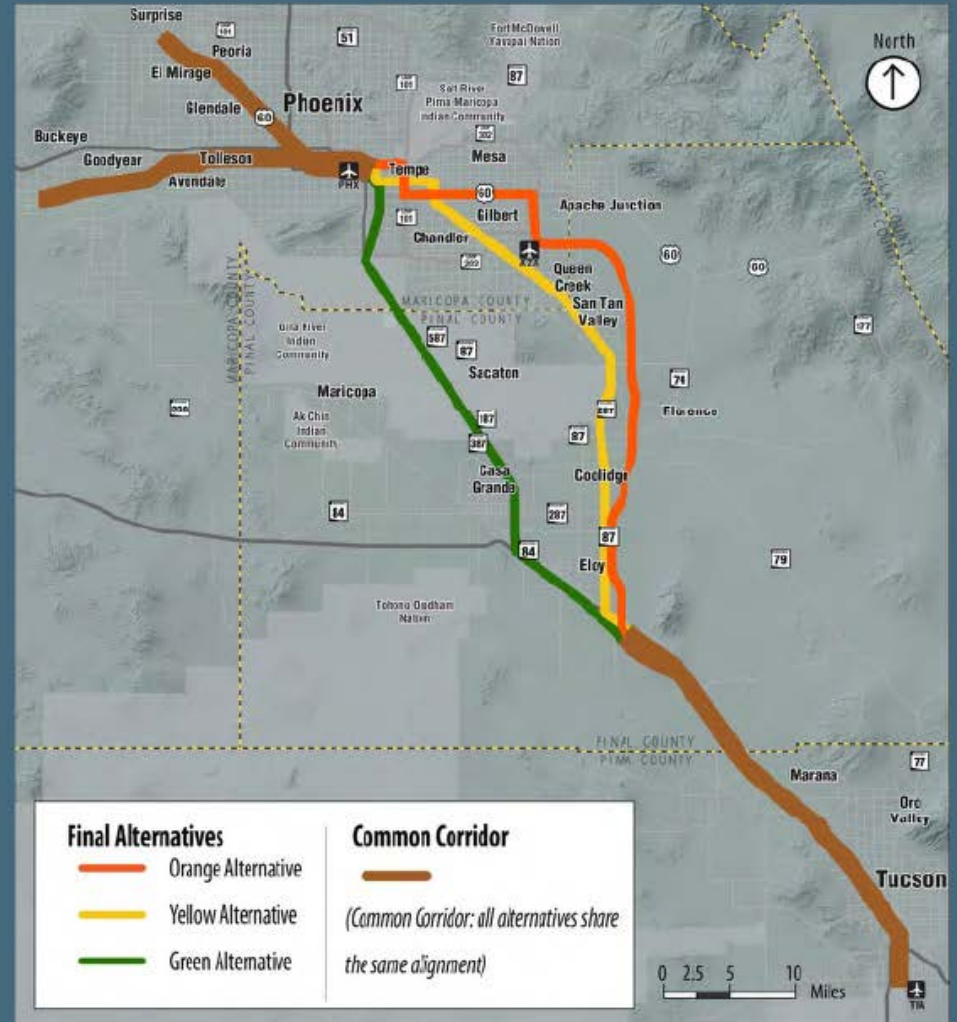


Summarize public meetings

- North-South Corridor Study public open houses – week of Nov. 17-20, 2014
- Presentation with open house before/after
- 40+ comments received to date (comment period through Jan. 9, 2015)
- Meeting summary:

Location	San Tan Valley	Eloy	Apache Junction	Coolidge-Florence
Date	11/17	11/18	11/19	11/20
Signed-in	118	21	81	141

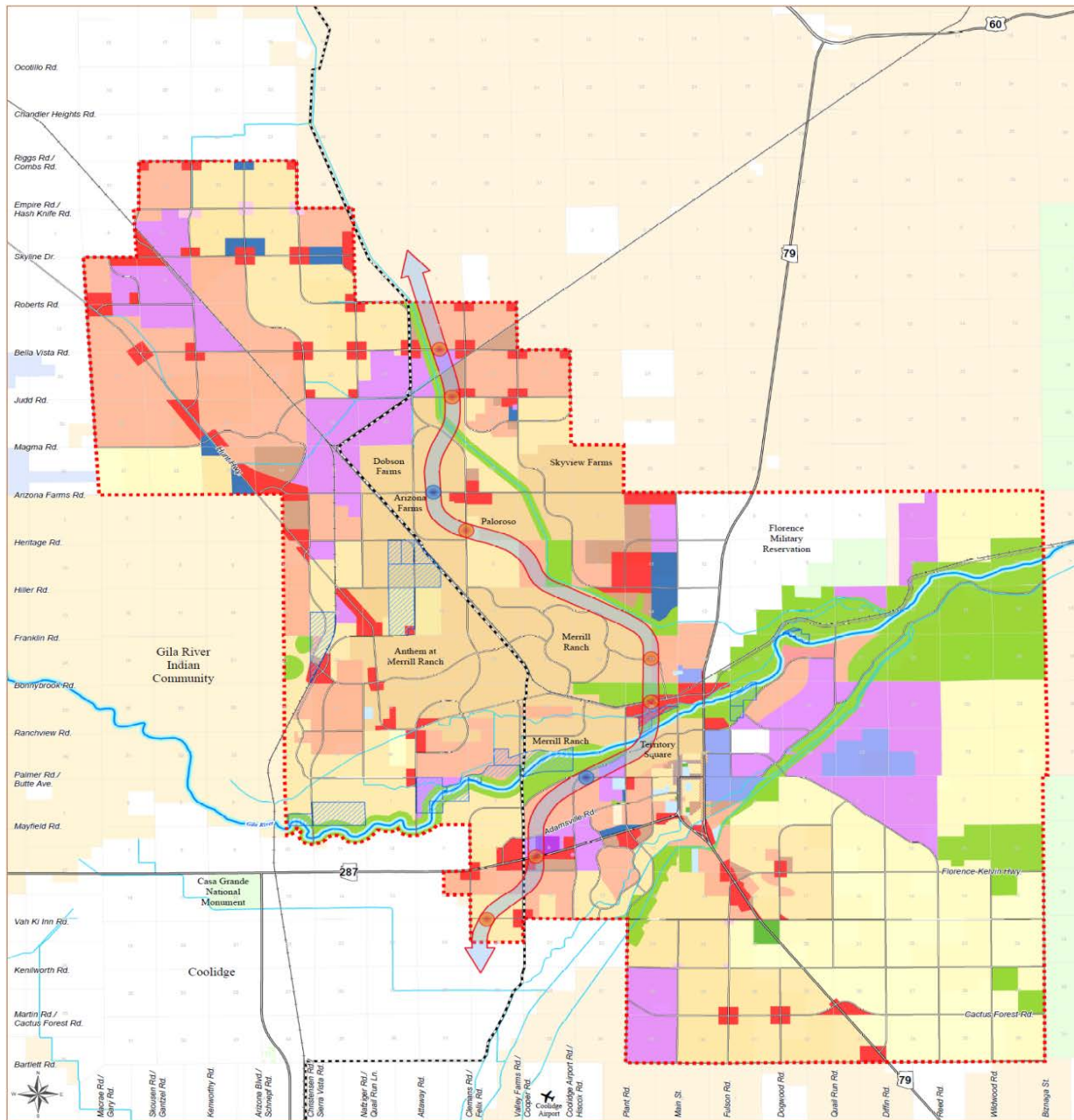
Passenger Rail Study



North-South Corridor Study

2020 GENERAL PLAN

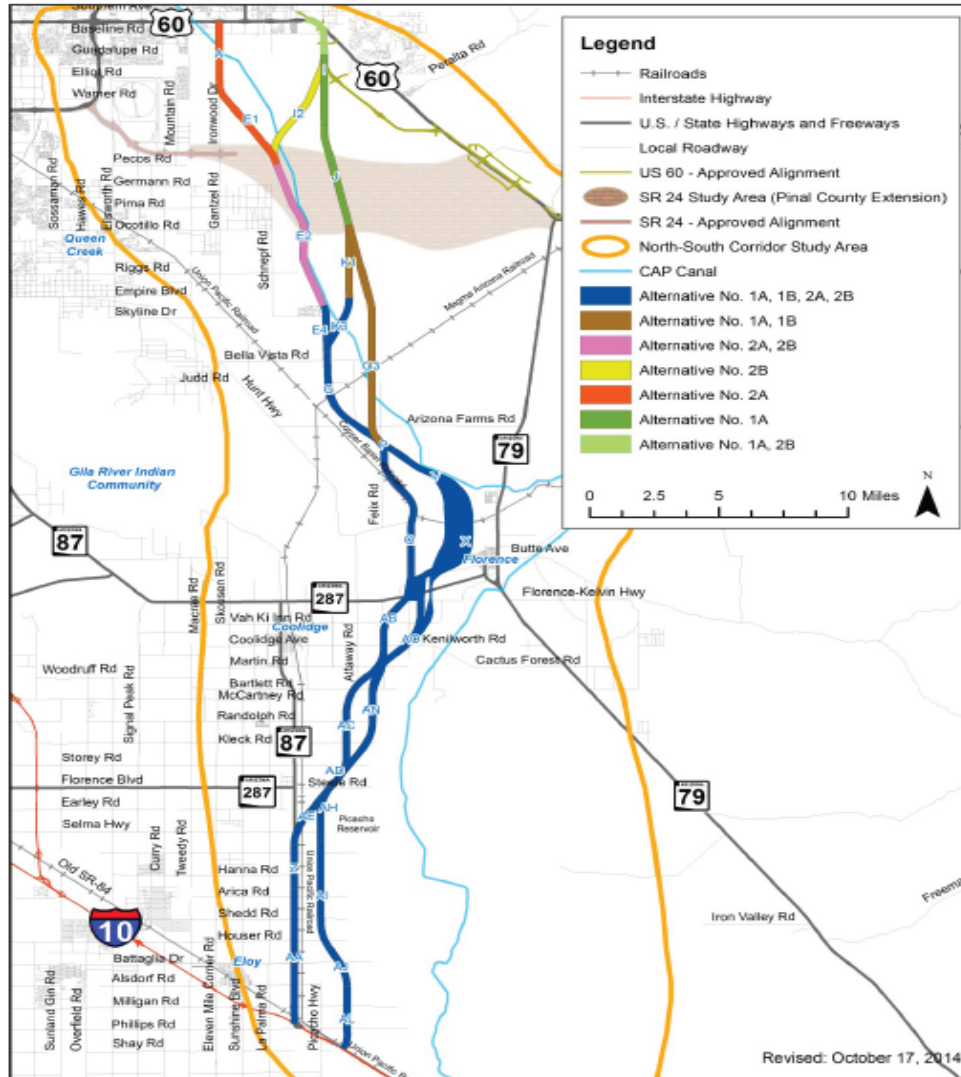
Approved
7/21/14



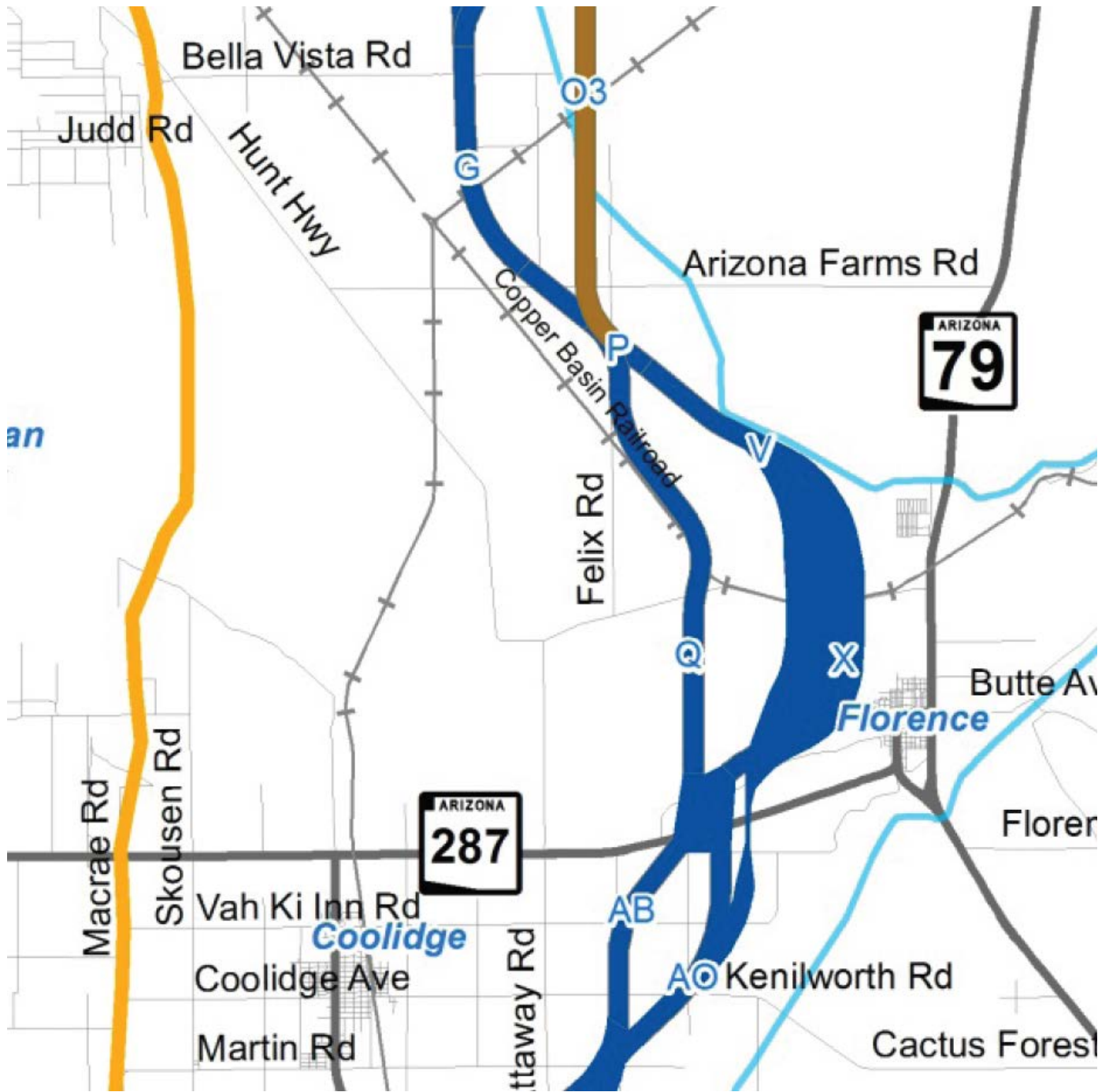
**Town of Florence 2020 General Plan
Future Land Use Map**

North-South Corridor Study

Route alternatives recommended for study in the EIS



ADOT ROUTE
ALTERNATIVES



TOWN PA
 PREFERRED
 ROUTE
 From North
 to South:

O3

V

X

AO

HOW TO COMMENT (BY 1/9/15)

- Online: azdot.gov/northsouthcorridorstudy
- Email: projects@azdot.gov
- Phone: 855.712.8530 (for information)
- Mail:
c/o North South Corridor Study
1655 W. Jackson, #126F
Phoenix, AZ 85007



December 8,
2014

